

Meeting of the Board of Governors

4.00 - 6.00 pm on Thursday, 23 May 2019
in 1B27 - Technopark, SE1 6LN

Agenda

<i>No.</i>	<i>Item</i>	<i>Pages</i>	<i>Presenter</i>
18.	SU election results	3 - 10	SW

Date of next meeting
4.00 pm on Thursday, 18 July 2019

Members: Jerry Cope (Chair), Douglas Denham St Pinnock (Vice-Chair), David Phoenix, Steve Balmont, Duncan Brown, John Cole, Michael Cutbill, Peter Fidler, Nelly Kibirige, Hilary McCallion, Mee Ling Ng, Jenny Owen, Jeremy Parr, Rashda Rana, Tony Roberts, Deepa Shah, Nazene Smout and Vinay Tanna

Apologies: Mark Lemmon

In attendance: Pat Bailey, Richard Flatman, Paul Ivey, James Stevenson, Shân Wareing, Michael Broadway and Askari Jafri

This page is intentionally left blank

	CONFIDENTIAL
Paper title:	SU Elections
Board/Committee:	Board of Governors
Date of meeting:	23 May 2019
Author(s):	Steve Baker, CEO Students' Union
Sponsor(s):	Shân Wareing, PVC Education and Student Experience
Purpose:	For Information
Recommendation:	The Board is requested to note the returning officer's report for the 2019 SU Elections

Executive Summary

The Students' Union had another successful year in getting students to participate in the students' union elections keeping turn out significantly above the national average (25.2%).

Under the Education Act 1994 the Board has a duty to take such steps as are reasonably practicable to ensure that appointments of the sabbatical offices should be by fairly and properly conducted election in a secret ballot in which all members are entitled to vote.

The Returning Officer's report is attached which confirms that the election was run in a fair and democratic manner.

This page is intentionally left blank



London South Bank Students' Union 2019

Returning Officer	Lorna Reavley - CEO, Solent Students' Union
Deputy Returning Officer	James-J Walsh - Head of Representation & Advice - LSBSU
Independent Staff Member	Steve Baker - Chief Executive - LSBSU

Election details

Election Dates	26 th Feb - 1 st March 2019
Method of Election	24hr online election
Number of candidacies in total this year	56 candidates
Number of students that voted this year	3,159
Election turnout of membership this year (%)	25.2%
Number of candidacies in total last year	56
Number of Students that voted last year	4,214
Election turnout of membership last year (%)	31.5%
Election turnout difference between this year and last year (%)	-7.3%

Complaints

Number of complaints submitted during election	5
Number of complaints submitted before election	0
Number of complaints during the election upheld	5
Number of official sanctions issued	5
Number of candidates disqualified from election	0



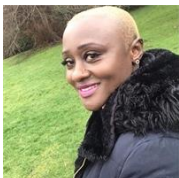
Elections overview

The Students' Union has done incredibly well in keeping turn out significantly above the national average.

Whilst the amount of voters was not as high as in AY2017/8, the number of candidates was higher. There may be a number of reasons for this: footfall was notably lower that week on campus; the two top roles President and VP: Education had incumbents re-standing for the role, and there is also an upturn in voter apathy at the moment as students feel continually disenfranchised by the wider political national politics environment.

The elections overall operationally ran smoothly, and the Union processes, systems and staff are both competent and comfortable in carrying out the elections, dealing with the broader array of issues that come up with candidates as compared to peer Unions. All in all a good solid and electorally sound election.

Major Office Bearers for 2019/20



Nelly Kibirige

Union President



**Sajjad
Hossain**

VP: Education



Ash Kamara

VP: Welfare &
Equalities



**Hattie
Tollerson**

VP: Activities



Voter Statistics

The infographic below details the number of votes cast for each of the roles elected during this year's Spring Election.

Election details						
Title	Individual voters	Total votes	Abstentions	Electronic votes	Postal votes	Proxy votes
Students' Union Elections 2018	4214	39618	5242	39618	0	0

Vote count by post			
Post name	Votes	Abstentions	Quorum
President	4134	322	0
Vice President Education	3939	428	0
Vice President Welfare & Equalities	3826	372	0
Vice President Activities and Employability	3746	321	0
University Student Governor & Chair of Union Council	3673	518	0
Disabled Student Officer	2876	749	0
International Students' Officer	292	34	0
Women's Officer	2098	331	0
Postgraduate Students' Officer	797	81	0
Sports Federation Chair	3603	401	0
Media Association Chair	3562	659	0
Course Rep Forum Chair	3547	516	0
RAG Forum Chair	3525	510	0

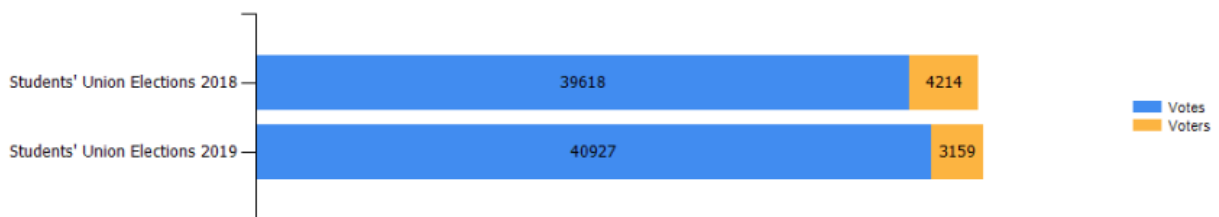


The amount of voters per role up for election, please note some roles, such as womens officer, is only allowed to have people who define as women vote for the candidates.

Students' Union Elections 2019 (London South Bank Students' Union)						
Post ID	Post group ID	Post title	Places	NR candidates	NRA candidates	Vote count
215	7148	President	1	3	3	2967
216	7731	Vice President Education	1	2	2	2803
217	7730	Vice President Welfare & Equalities	1	8	8	2774
218	7150	Vice President Activities and Employability	1	6	6	2728
219	7733	University Student Governor & Chair of Union Council	1	3	3	2693
222	7174	Women's Officer	1	2	2	1538
220	7183	Disabled Student Officer	1	4	4	2599
229	7180	Ethical and Environmental Officer	1	3	3	2579
230	7737	European Union Students' Officer	1	2	2	256
221	7176	International Students' Officer	1	2	2	194
231	7178	Lesbian Gay Bisexual & Trans Students' Officer	1	2	2	2501
225	7249	Media Association Chair	1	2	2	2511
226	7736	Course Rep Forum Chair	1	2	2	2504
227	7732	RAG Forum Chair	1	2	2	2477
236	7735	Societies Guild Forum Chair	1	2	2	2462
224	12789	Sports Federation Chair	1	2	2	2455
234	7738	NUS Delegate	4	11	11	2442
237	7244	Student Trustee	4	5	5	2444

Below is a comparison of the votes and voters between the 2018 and 2019 Election

Total votes and voters

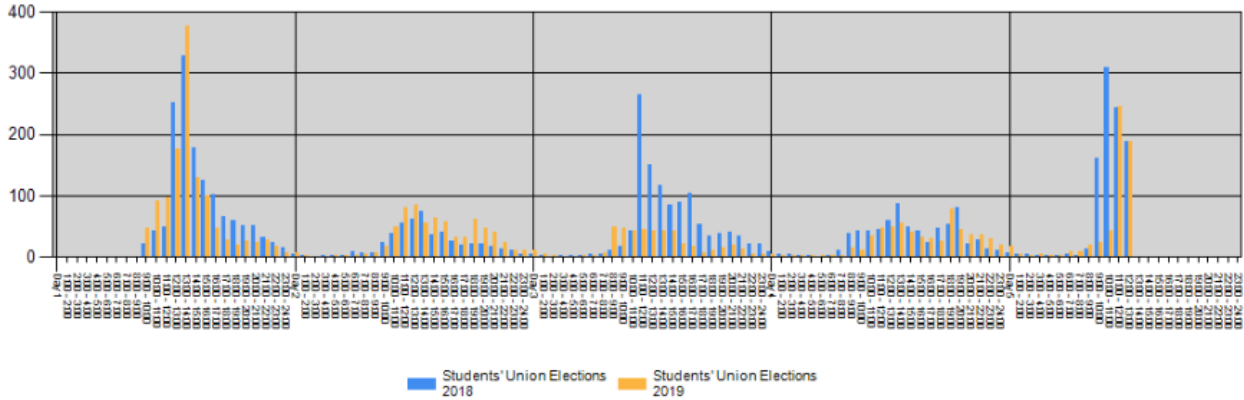


Below is a graph detailing the difference in voter numbers per hour across the voting period

2019 STUDENTS' UNION ELECTIONS

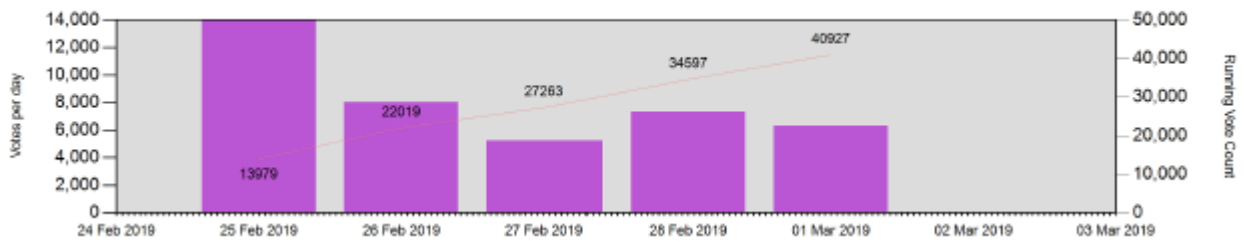
LSBSU

Voters per hour



The graph below details the number of votes cast per day through our electronic voting system

Votes per source



Participant Stats

The following information is regarding the demographic profile of those who voted in our elections

School

School of Applied Sciences	33% of 893
School of Business	31.6% of 1863
School of Engineering	29.9% of 1211
School of Arts & Creative Industries	29.6% of 1006
School of Law & Social Sciences	25.2% of 1438
School of Health & Social Care	20% of 4339
School of the Built Environment & Architecture	18.4% of 2091

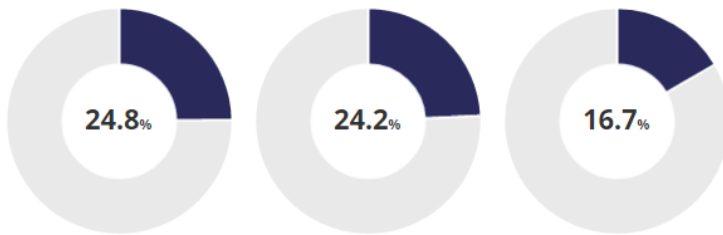
School Participation - based on %turnout

- | | |
|--------------------------------------|---------------------------------------|
| 1. School of Business (31.6% -5.5) | 4. Arts & Creative Ind. (29.6% -5.2%) |
| 2. Engineering (29.9% -7.6%) | 5. Applied Sciences (33% -1.5%) |
| 3. Social Science & Law (25.2% -10%) | 6. Health & Social Care (20% -5%) |

2019
STUDENTS' UNION
ELECTIONS
LSBSU

7. Built Env. & Architecture (18.4% -10.4%)

Gender

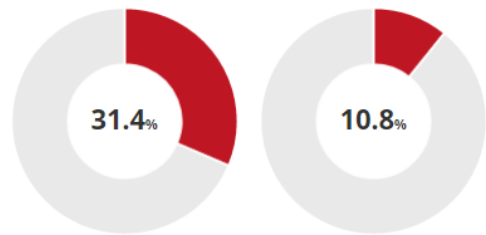


Women

Men

Other Genders

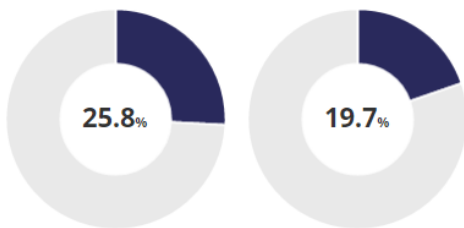
Full Time Vs Part Time



Full Time Students

Part Time Student

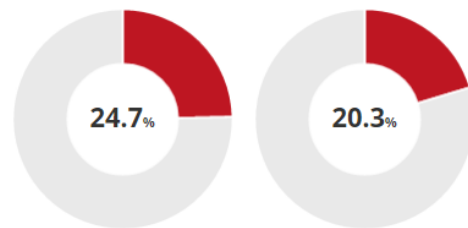
Undergraduate Vs. Postgraduate



Undergraduate

Postgraduate

Campus



Southwark Campus

Havering Campus