

Board of Governors Meeting

4.00 - 6.00 pm on Thursday, 12 October 2017
in Boardroom - Technopark, SE1 6LN

Agenda

<i>No.</i>	<i>Time</i>	<i>Item</i>	<i>Pages</i>	<i>Presenter</i>
16.		St George's quarter presentation	149 - 186	IM

Date of next meeting

4.00 pm on Thursday, 23 November 2017

Members: Jerry Cope (Chair), David Phoenix, Sodiq Akinbade, Steve Balmont, Shachi Blakemore, Duncan Brown, Julie Chappell, Michael Cutbill, Douglas Denham St Pinnock, Peter Fidler, Hilary McCallion, Kevin McGrath, Jenny Owen, Tony Roberts and Suleyman Said

In attendance Pat Bailey, Richard Flatman, Ian Mehrtens, James Stevenson and Michael Broadway

Apologies Carol Hui and Mee Ling Ng

This page is intentionally left blank

Pre-Board Presentation

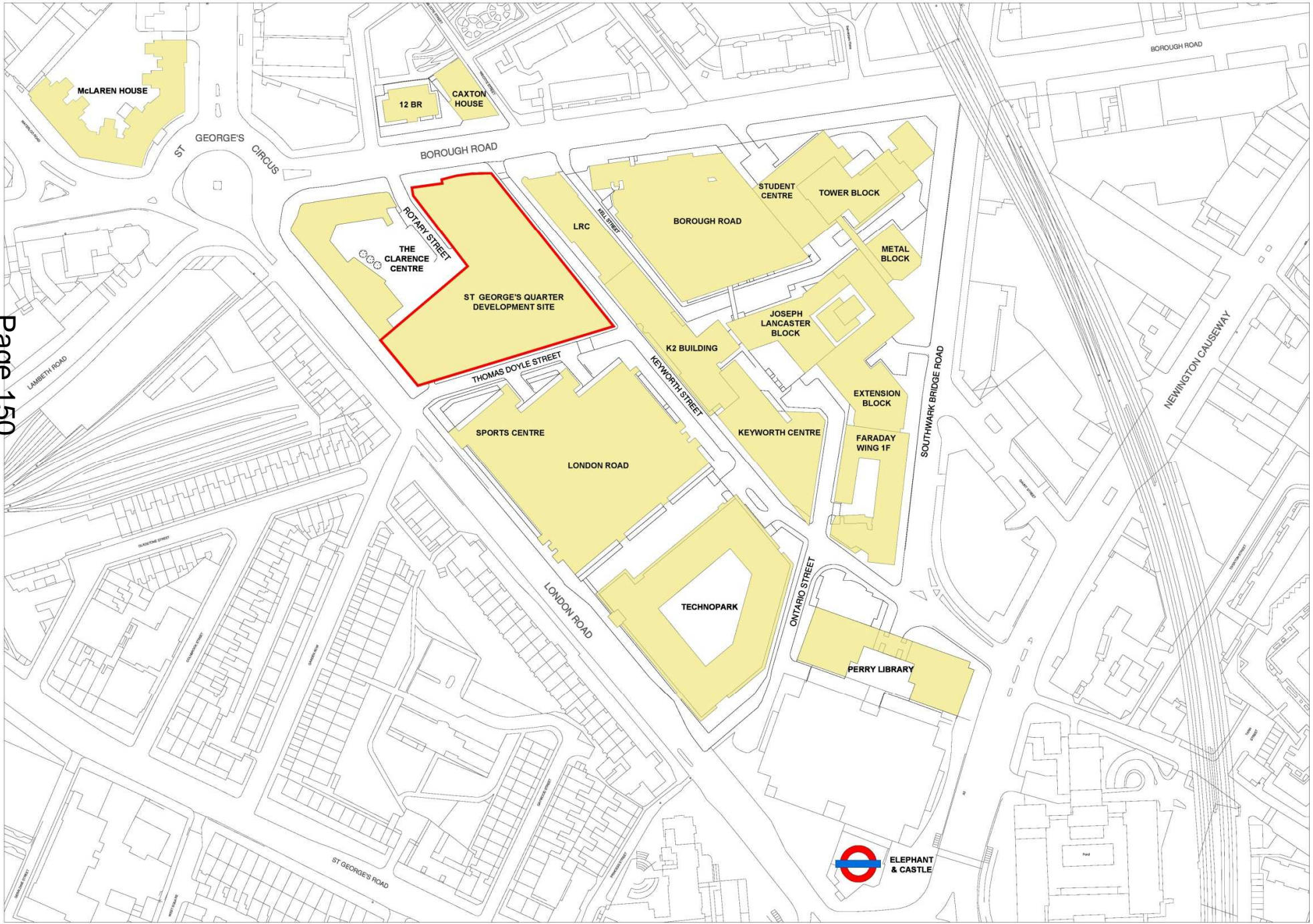
October 2017

St George's Quarter Development

Ian Mehrtens

Chief Operating Officer

St George's Quarter





Keyworth Street

Borough Road

Thomas Doyle Square

Central Concourse

Rotary Yard

THEATRE ENTRANCE

Substation

University Square

Sports Centre

LONDON ROAD BUILDING

London Road

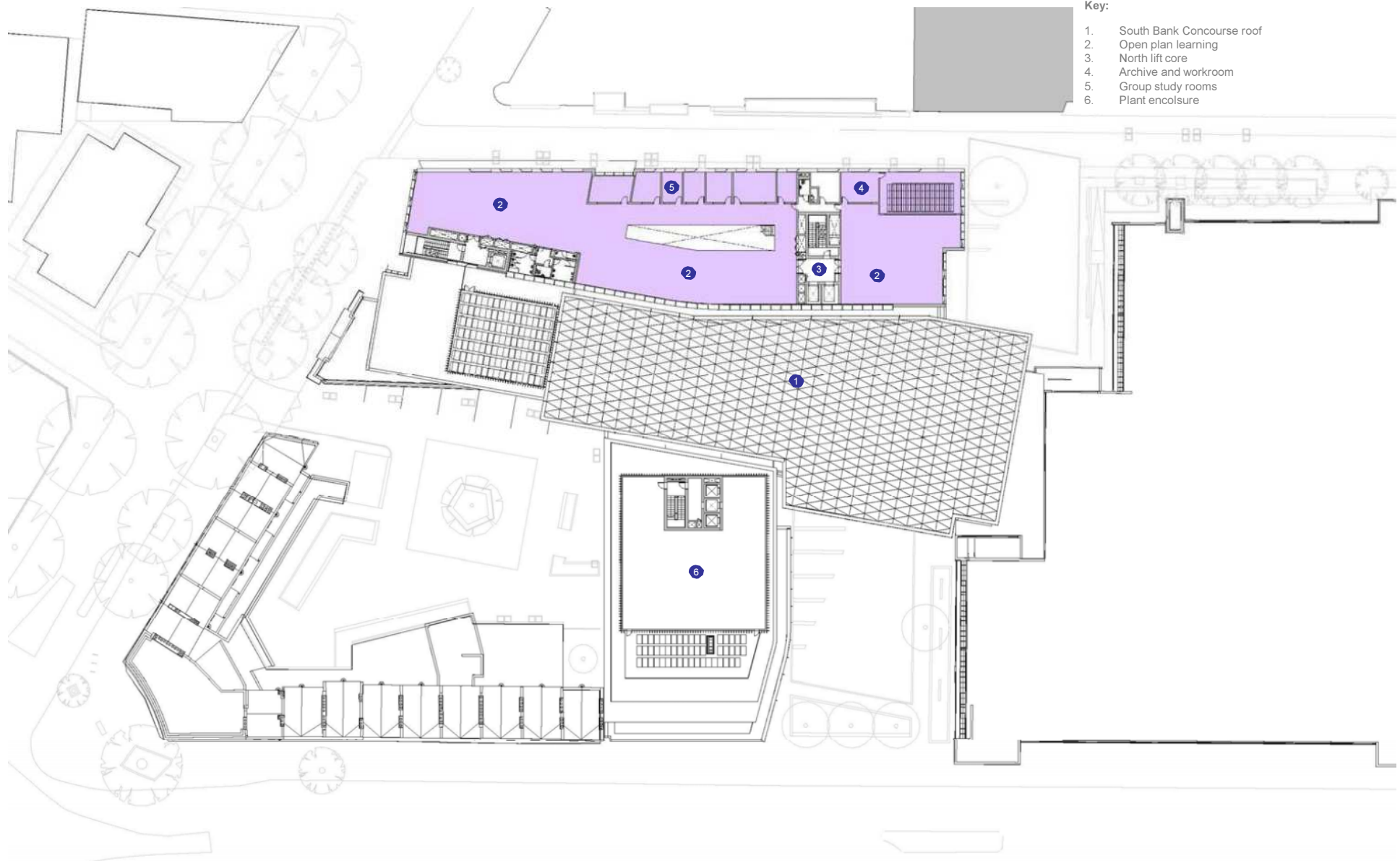


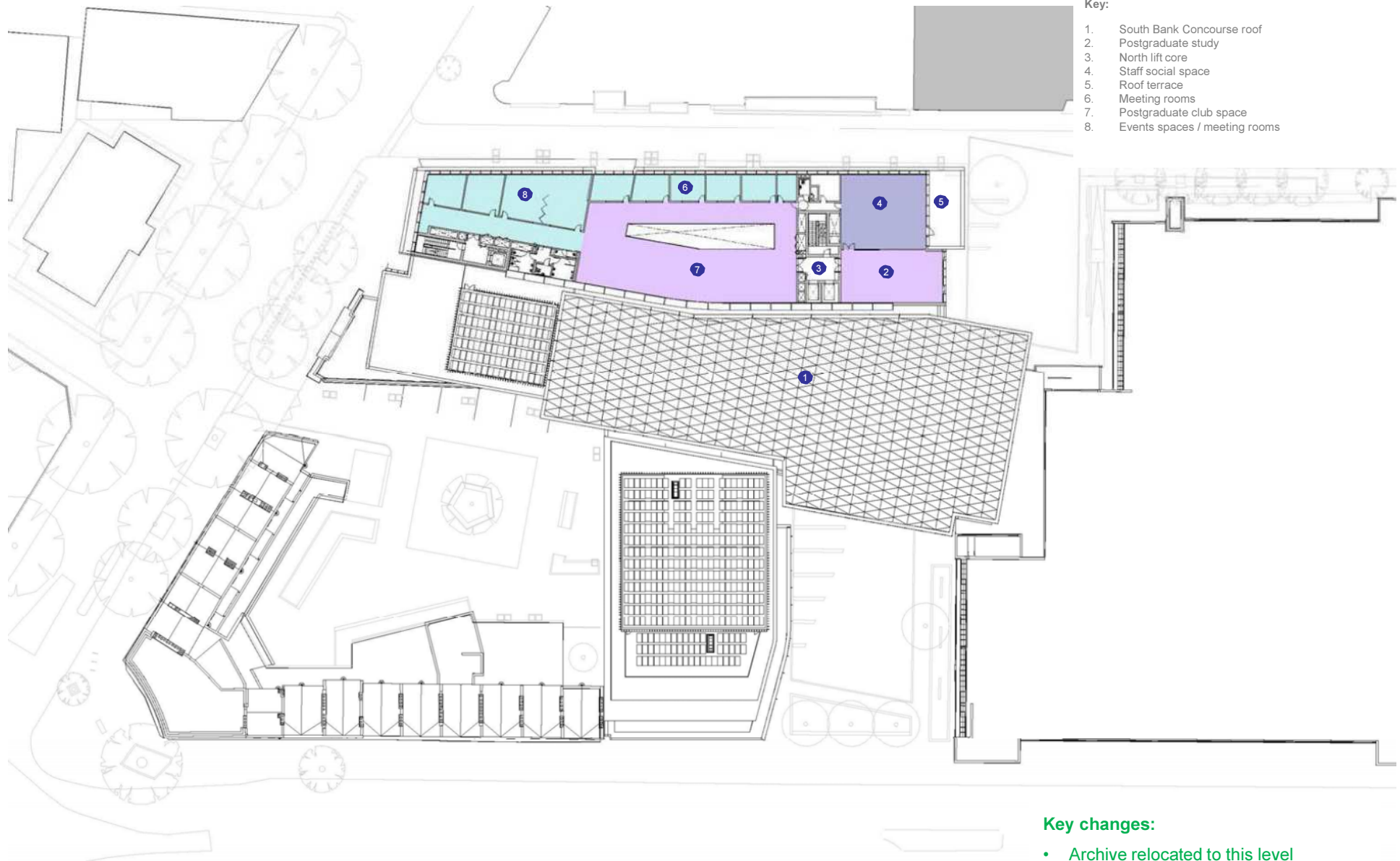




- Key:
- 1. South Bank Concourse roof
 - 2. Open plan learning
 - 3. North lift core
 - 4. Quiet study space or computing
 - 5. Group study rooms
 - 6. Green roof
 - 7. Plant
 - 8. Open plan learning / break-out
 - 9. South lift core
 - 10. Project spaces
 - 11. Small teaching / seminar spaces





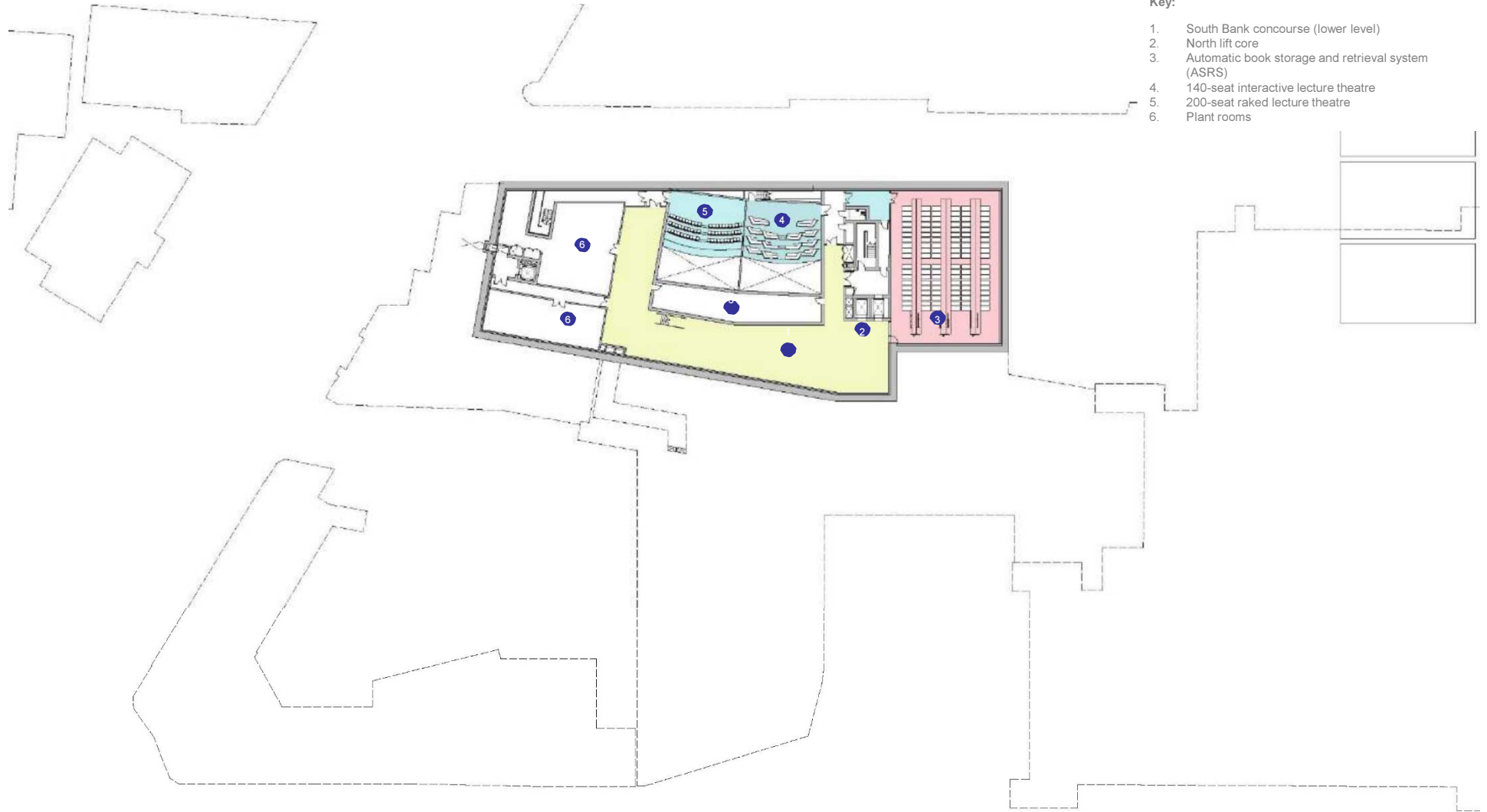


Key changes:

- Archive relocated to this level
- 'Club' space for events and social space created at this level

Key:

- 1. South Bank concourse (lower level)
- 2. North lift core
- 3. Automatic book storage and retrieval system (ASRS)
- 4. 140-seat interactive lecture theatre
- 5. 200-seat raked lecture theatre
- 6. Plant rooms





Interior Views Proposed interior view looking towards the main entrance at ground floor level



Interior Views Proposed interior view looking north along the concourse at first floor level

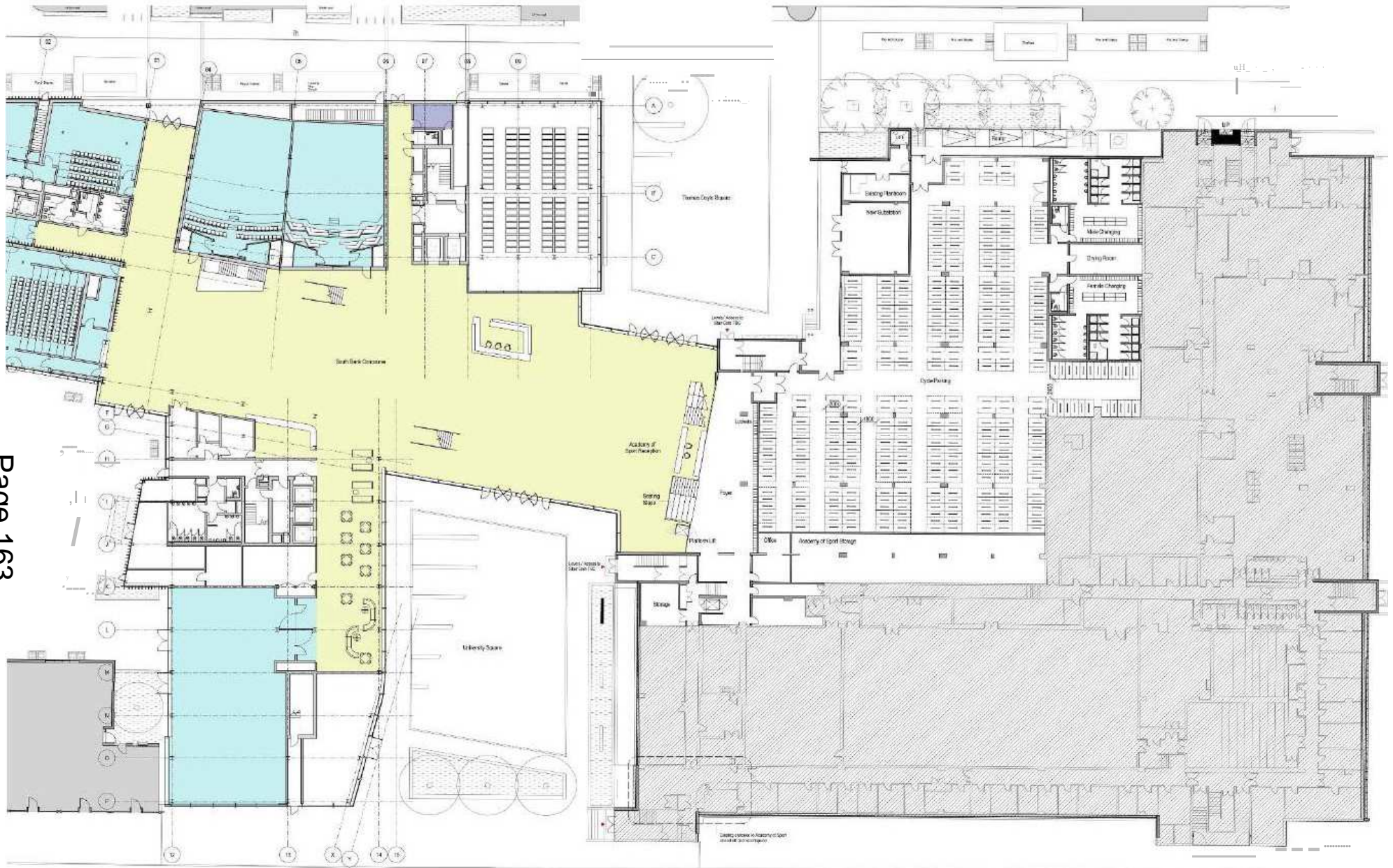


Page 161

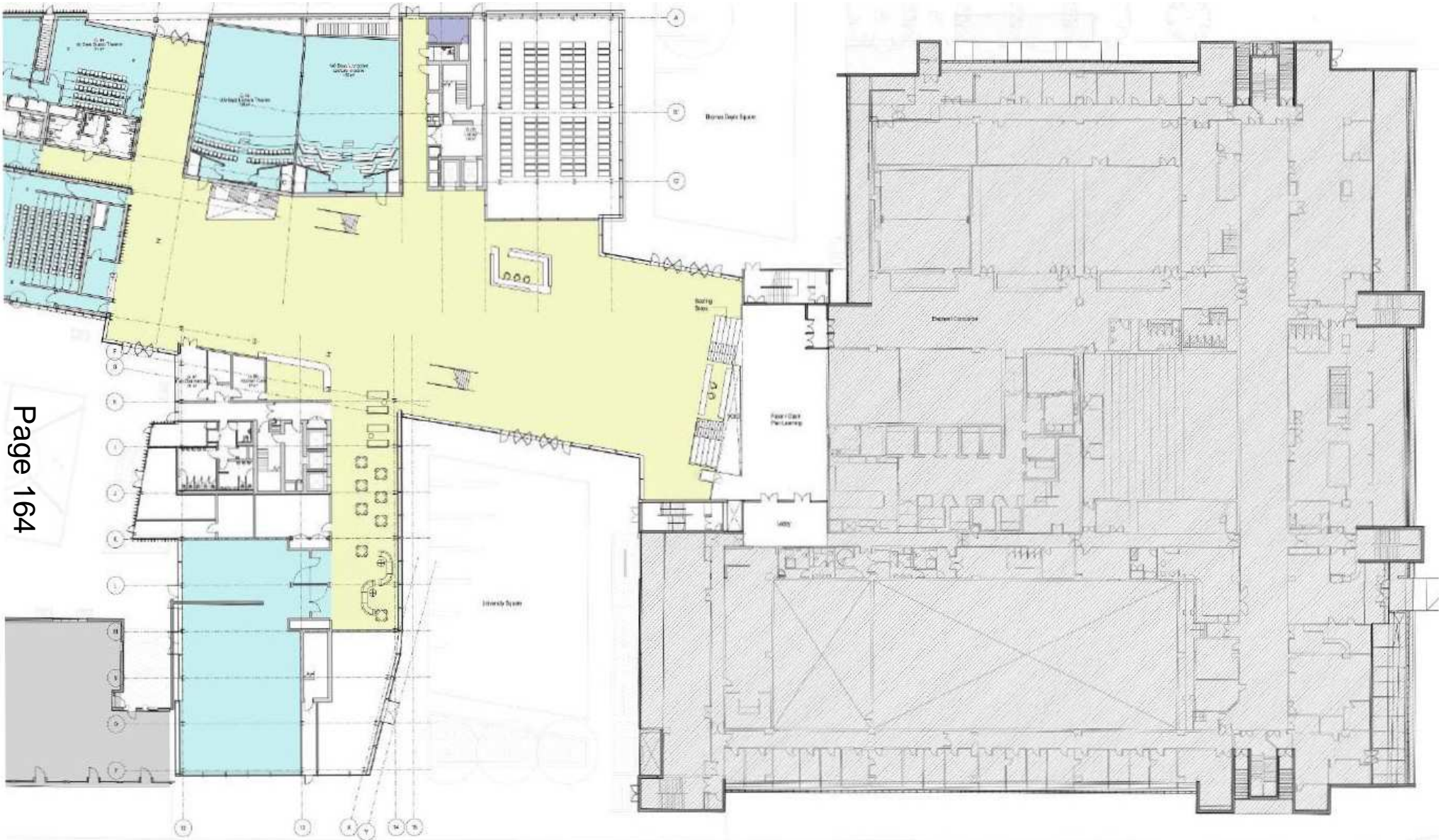
Interior Views Proposed view looking south along the concourse at first floor level

WilkinsonEyre

Interface with the London Road Building



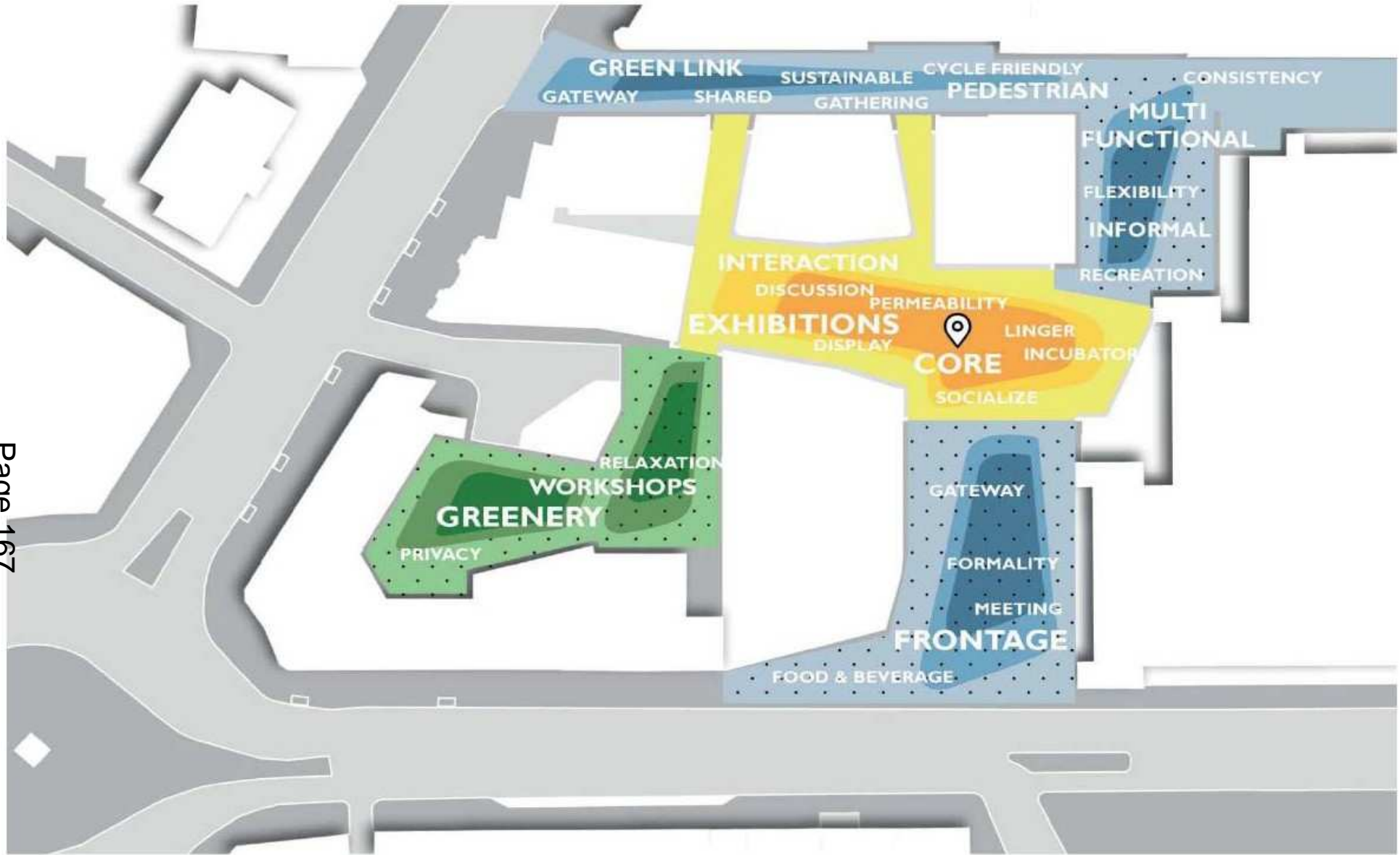
London Road Building Interface Ground floor plan





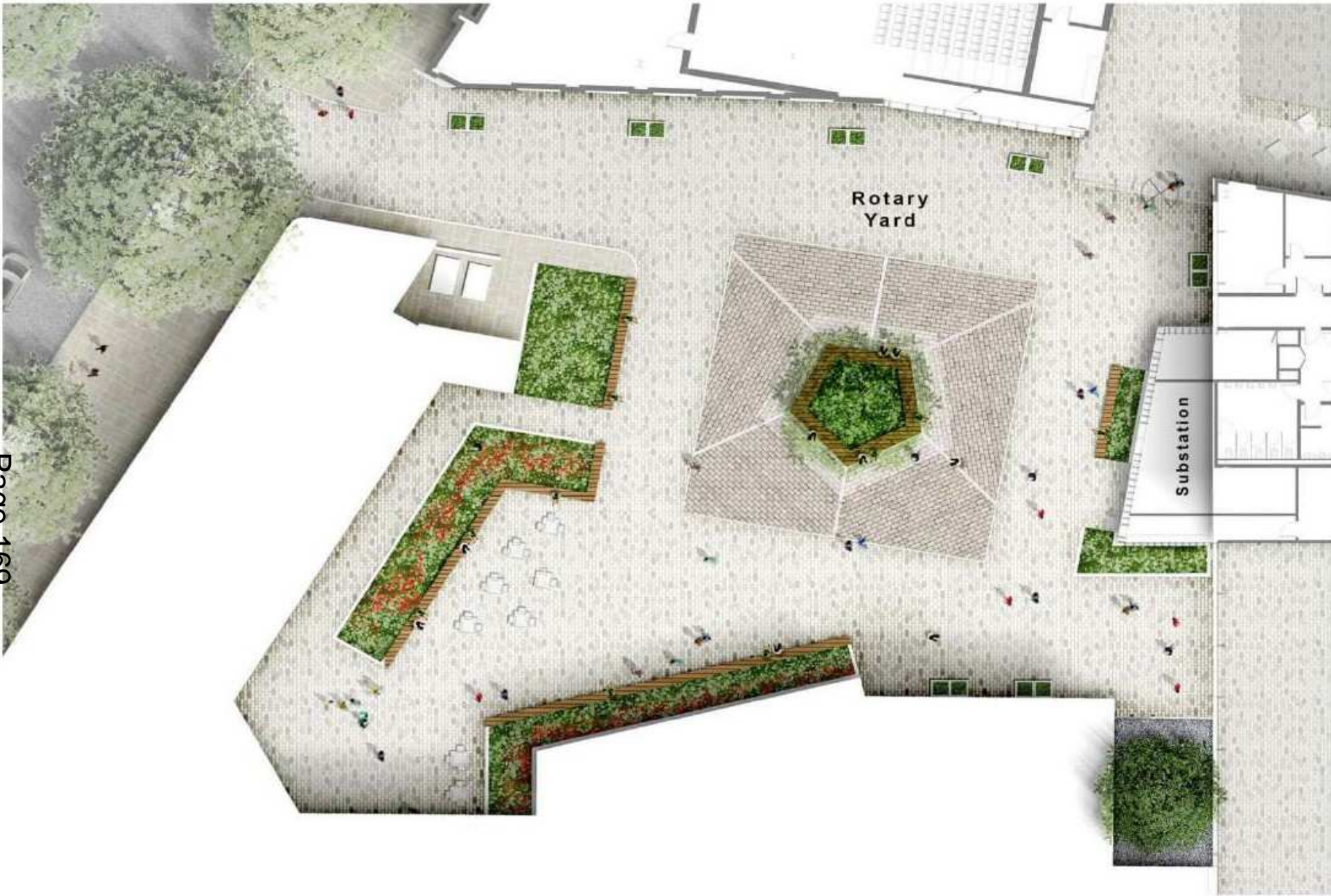
London Road Building Interface 3D view

Landscape Design Proposals





© Churchman
Landscape Architects





Exterior Views



Key Views Existing view looking south-east along London Road





Key Views Existing view looking north from Garden Row across London Road





Key Views Existing view looking north-west along London Road





The Presbyterian Chapel, 1935 (Southward Archive Library)



The Presbyterian Chapel, present day











Key Views Existing view looking north-west across Keyworth Street



Key Views Proposed view looking north-west across Keyworth Street

WilkinsonEyre



