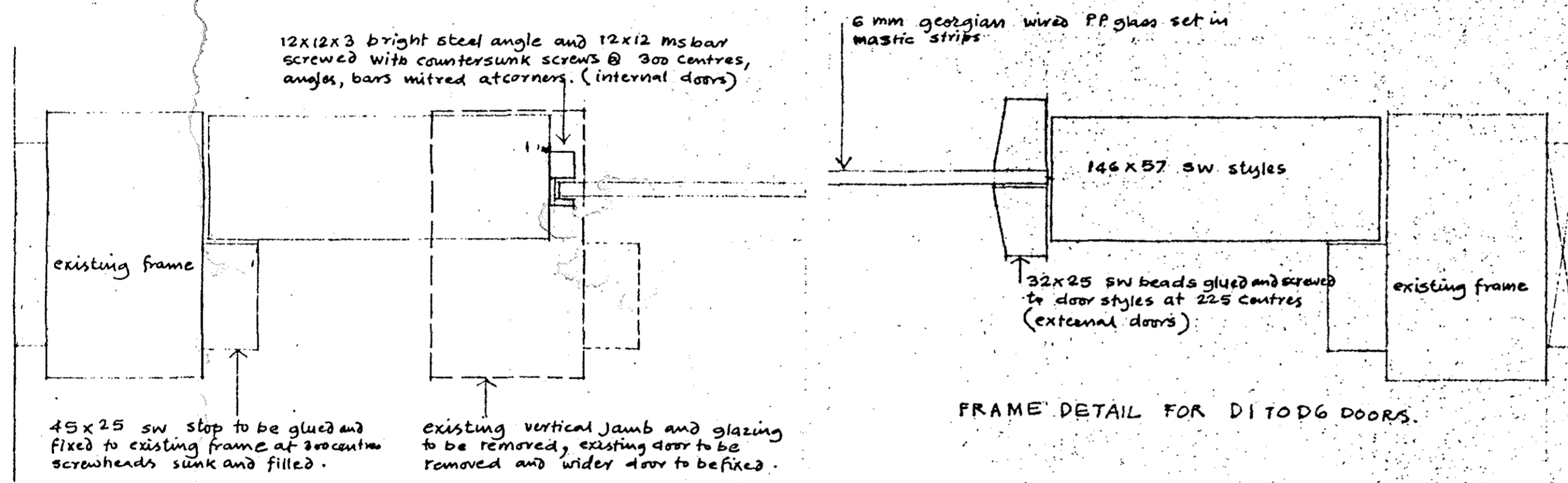


Nicholls and Clark - Marathon Senior Sliding door gear S4 Set-PH 35643  
 Pelmet 2466 mm long PH 35648  
 2 Kicking plates - 800x150 SA/9 - by 'SWEL'  
 Nicholls and Clark - Facility Indicator Prof; Right hand PH 33887

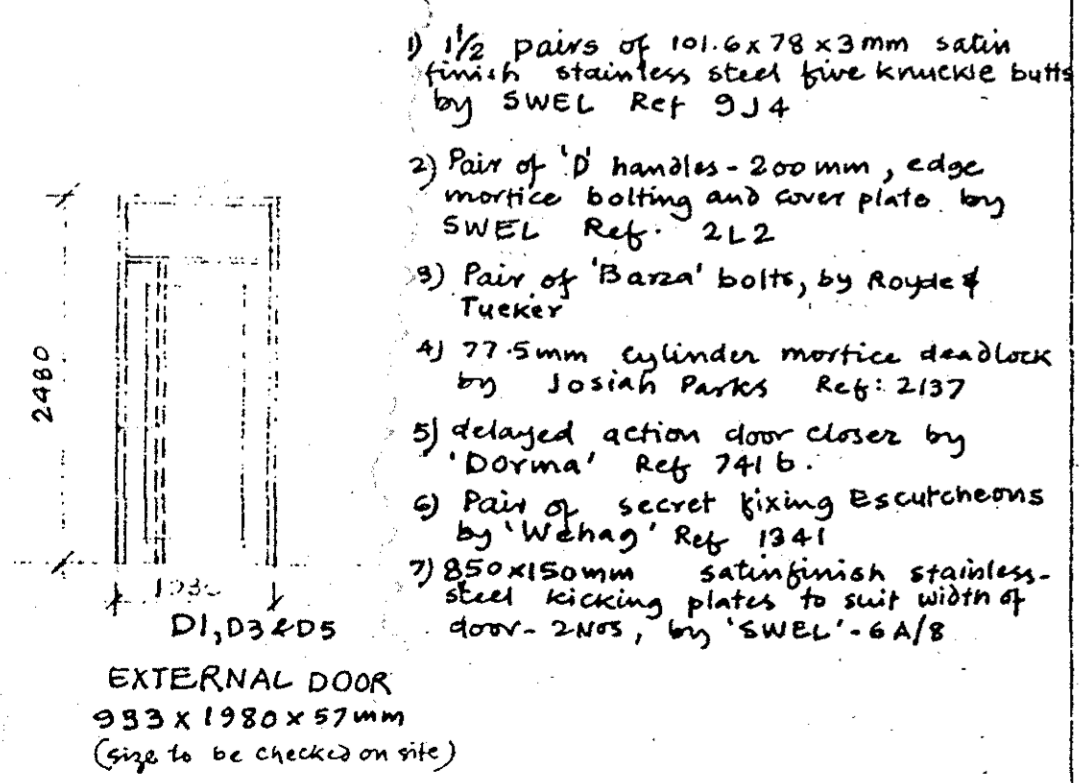
job no	drawing no
<b>GLC ILEA</b>	
Department of Architecture and Civic Design County Hall SE1 7PB	
Director of Architecture Peter Jones FRIBA FRTP	
site ref	
drawn	checked section ref
telephone 01.633	

DETAIL OF SLIDING DOOR, D7



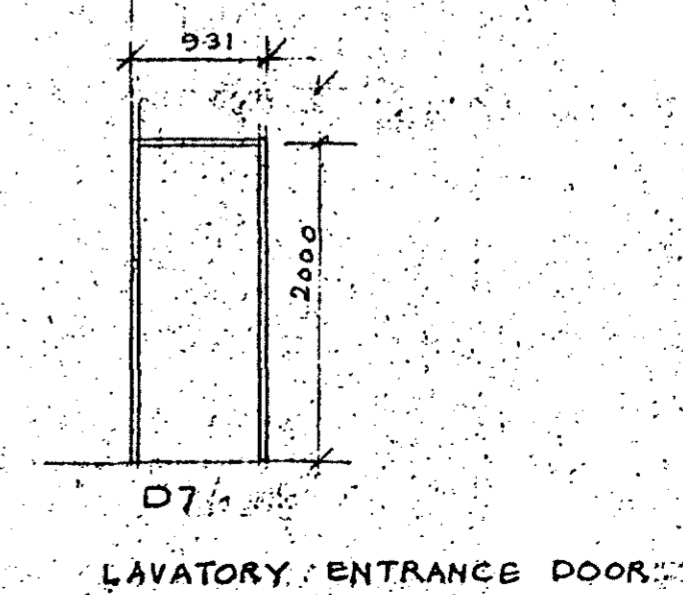
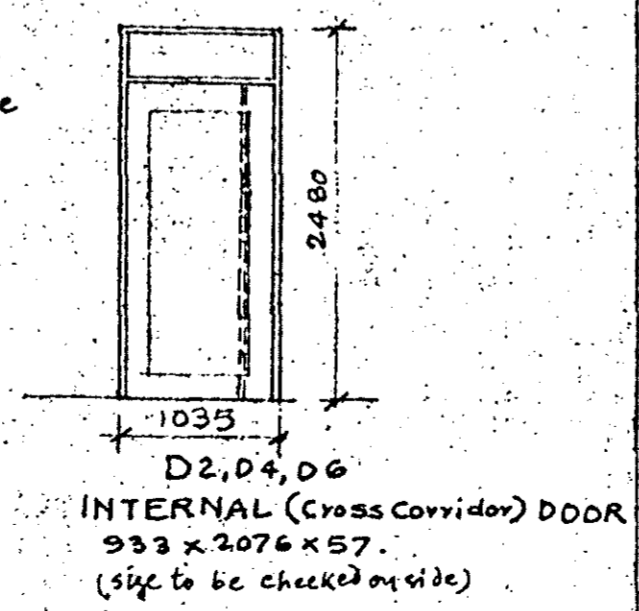
FRAME DETAIL FOR D1, D4, D6 DOORS.

revisions	date
a. doors D7 & D8 changed to sliding doors	Sept
b. door D8 omitted doors revised	Aug 87



- 1) 1/2 pairs of 101.6x78x3 mm satin finish stainless steel five knuckle butts by SWEL Ref 9J4
- 2) Pair of 'D' handles - 200 mm, edge mortice bolting and cover plate by SWEL Ref. 2L2
- 3) Pair of 'Barza' bolts, by Royle & Tucker
- 4) 77.5 mm cylinder mortice deadlock by Josiah Parks Ref: 2137
- 5) delayed action door closer by 'Dorma' Ref 741 b.
- 6) Pair of secret fixing Escutcheons by 'Wehag' Ref 1341
- 7) 850x150 mm satin finish stainless-steel kicking plates to suit width of door - 2 nos, by 'SWEL' - 6A/8

- 1) hinges as D1
- 2) 'D' handle as D1.
- 3) 381x76 stainless steel push plate by 'SWEL' Ref G A/2 with "PUSH"
- 4) door closer as D1
- 5) Kicking plates as D1.



job	UPLANDS HOSTEL Etherstone Road SW16		
title	DOOR DETAILS		
scale	1:50 & 1:2	date	APRIL '85
block	storey	section	room
job no	11221	drawing no	6 b